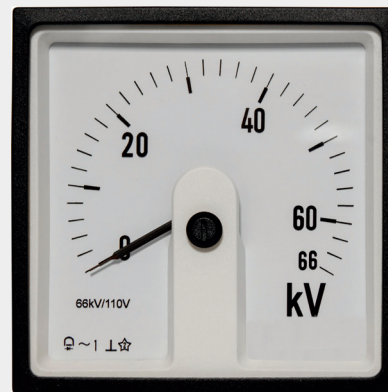
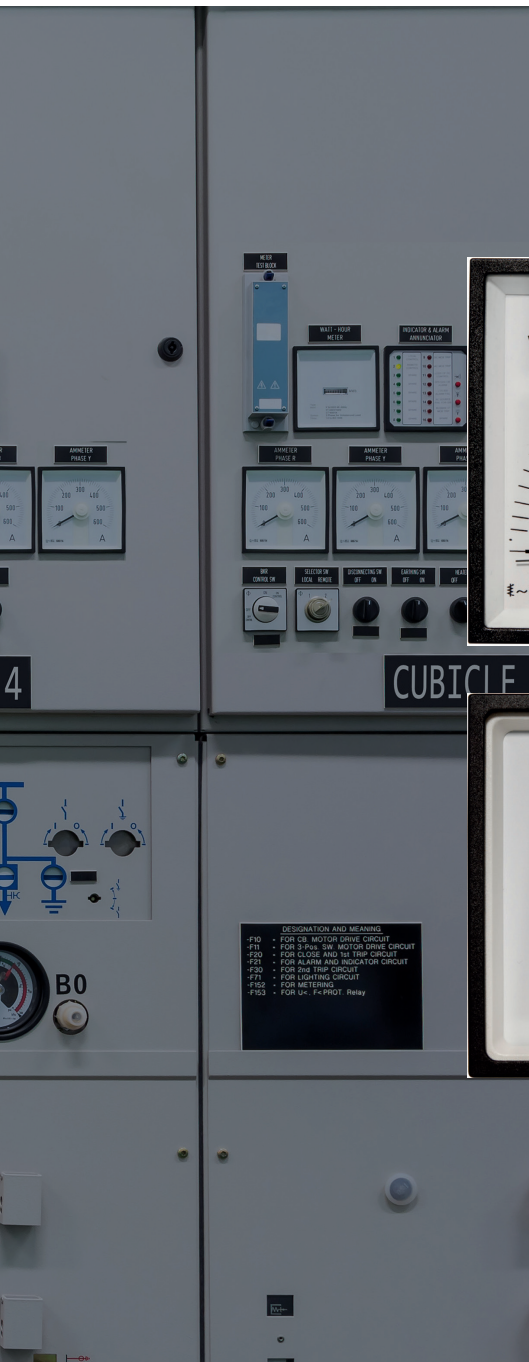


SIMPLE MEASUREMENT IN ELECTRICAL NETWORK

ANALOG METERS FOR
DISPLAYING THE MOST
IMPORTANT ELECTRICAL DATA



SIRAX ANALOG METER SERIES

SIRAX BM100 • SIRAX BM200/250 • SIRAX BM300/350 • SIRAX BM400 • SIRAX BM500/550
SIRAX BM600/650 • SIRAX BM700/750 • SIRAX BM800/850 • SIRAX BM900 • SIRAX BM910 • SIRAX BM920



ANALOG METERS FOR DISPLAYING THE MOST IMPORTANT ELECTRICAL DATA



Camille Bauer Metrawatt AG offers you a wide range of analog display measuring devices for almost all areas of application. A wide variety of device types, housing dimensions and scales are available for installation in control panels, machines and mosaic grids.

It can be used to solve the following measurement tasks:

- Direct measurement of DC current or AC current (with current transformer or shunt)
- DC voltage or AC voltage
- AC voltage with integrated voltmeter switch
- Frequency
- Frequency with vibration measuring mechanism
- Power
- Power factor
- Operating hours counter
- Synchronizing device (synchroscope)
- Special designs on request

FLEXIBLE

High flexibility thanks to a large number of variants

Scale divisions that can be selected according to customer specifications

Deliberately no company logo on the front scale

Selectable position of use

Simple measuring unit at the best price

High delivery promise

SIMPLE

Very easy and quick assembly and installation

No auxiliary voltage required

No parameterization necessary

Clear design

CLEAR

Simple and clear presentation of the measured values

Fast acquisition of measured values

Tendencies and trends can be seen at a glance

RELIABLE

Compact and robust housing

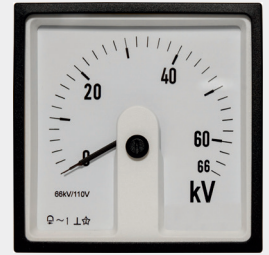
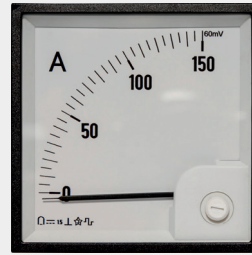
Contact protection of the terminals

Low probability of failure of the display

High device security, durability and availability



OVERVIEW OF ANALOG METERS OF THE SIRAX SERIES



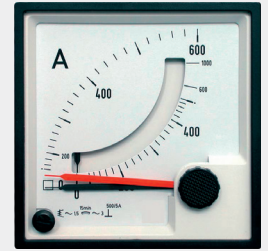
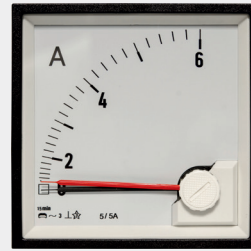
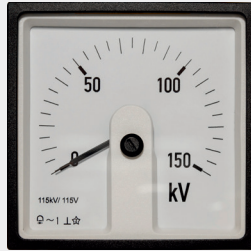
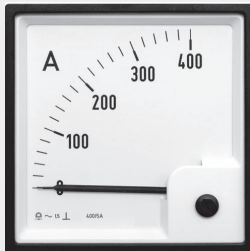
BM100

BM150

BM200

BM250

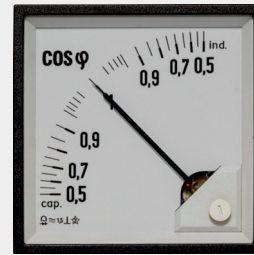
MEASURING TYPE	Current and voltage			
DEVICE TYPE	Moving Iron	Moving Iron with Switch	Moving Coil	
SCALLING POINTER	knife-edge pointer			
TYPE OF SCALE	90°	90°	90°	240°
FRONT FRAME SIZE	□48mm / □72mm / □96mm / □144mm	□72mm / □96mm	□48mm / □72mm / □96mm / □144mm	
MOUNTING POSITION	0 ... 120°			
MEASURED PARAMETERS	AC current / voltage	1- or 3-phase AC current / voltage	DC current / voltage	
MEASURING RANGE CURRENT	100mA ... 100A ... / 5A (for Converter) ... / 1A (for Converter)	1A / 5A	15μA ... 100A 4 ... 20mA (for Converter)	50μA ... 100A 4 ... 20mA (for Converter)
MEASURING RANGE VOLTAGE	6V ... 1000V ... / 100V (for Converter) ... / 110V (for Converter)	100V ... 600V	15mV ... 1000V 60mV ... 150mV (for Shunt)	60mV ... 600V 50mV ... 150mV (for Shunt)
INSULATION TEST VOLTAGE	3kV 2kV (for □48mm)	3kV	3kV 2kV (for □48mm)	
ACCURACY	1.5% (from the reference value)			
HOUSING MATERIAL	Polycarbonate			
FLAMMABILITY CLASS	UL94 V-0, self-extinguishing, non-dripping, halogen-free			
HOUSING PROTECTION	IP52 housing on the front IP00 connections without protection against accidental contact IP20 connections with protection against accidental contact			
CONFORMITY TO STANDARDS	Performance: IEC 60051 Safety: IEC 61010			



BM300		BM350		BM400		BM500		BM550	
Current and voltage									
Moving Coil with Rectifier				Moving Iron or Moving Coil for DIN rail mounting		Bimetal		Bimetal / bimetal Moving iron	
knife-edge pointer					knife-edge pointer Maximum value bar pointer				
90°		240°		90°		90°		90°	
□48mm / □72mm / □96mm / □144mm				□45mm (45 x 85 x 57mm)		□72mm / □96mm			
0 ... 120°									
AC current / voltage				AC or DC current, AC or DC voltage		AC current			
100µA ... 10A ... / 5A (for Converter) ... / 1A (for Converter)		100mA ... 10A ... / 5A (for Converter) ... / 1A (for Converter)		1mA ... 15A ... / 5A (for Converter) ... / 1A (for Converter)		1A / 5A 1A...10000A / 1A 1A...10000A / 5A			
6V ... 600V ... / 100V (for Converter) ... / 110V (for Converter)				100mV ... 600V ... / 100V (for Converter) ... / 110V (for Converter)		--			
3kV 2kV (für □48mm)		2kV		3kV		3kV			
1.5% (from the reference value)					3% (from the reference value)				
Ploycarbonate									
UL94 V-0, self-extinguishing, non-dripping, halogen-free									
IP52 housing on the front IP00 connections without protection against accidental contact IP20 connections with protection against accidental contact									
Performance: IEC 60051 Safety: IEC 61010									



OVERVIEW OF ANALOG METERS OF THE SIRAX SERIES



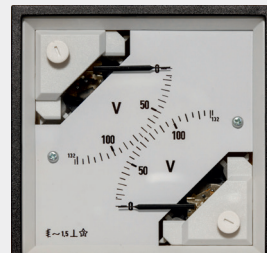
BM600

BM650

BM700

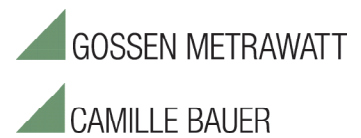
BM750

	BM600	BM650	BM700	BM750
MEASURING TYPE	Frequency		Power factor (Single-phase / 3-phase network)	
DEVICE TYPE	Moving Coil with built-in converter			
SCALLING POINTER	knife-edge pointer			
TYPE OF SCALE	90°	240°	90°	240°
FRONT FRAME SIZE	□72mm / □96mm	□96mm / □144mm	□72mm / □96mm	□96mm / □144mm
MOUNTING POSITION	0 ... 120°			
MEASURED PARAMETERS	45...50...55 Hz / 45...55...65 Hz / 45...60...65 Hz 360...400...440 Hz / 380...400...420 Hz		COSφ cap 0.5...1...0.5 ind COSφ cap 0.8...1...0.3 ind COSφ cap 0.8...1...0.8 ind	
MEASURING RANGE CURRENT	57.7V ... 500V			
MEASURING RANGE VOLTAGE	--		1A / 5A	
INSULATION TEST VOLTAGE	2kV		2kV	
ACCURACY	0.5% (from the reference value)		1.5% (from the reference value)	
HOUSING MATERIAL	Ploycarbonate			
FLAMMABILITY CLASS	UL94 V-0, self-extinguishing, non-dripping, halogen-free			
HOUSING PROTECTION	IP52 housing on the front IP00 connections without protection against accidental contact IP20 connections with protection against accidental contact			
CONFORMITY TO STANDARDS	Performance: IEC 60051 Safety: IEC 61010			



BM800		BM850		BM900		BM910		BM920			
Active and reactive power (Single-phase / 3-phase network)				Time in hours				Current and voltage		Frequency and phase difference	
Moving Coil with built-in converter				Roller counter with synchomotor				2 in 1 Moving Iron		Synchroscope	
knife-edge pointer						knife-edge pointer		LED 360°			
90°		240°		90°		90°		--			
□96mm				□72mm / □96mm		□72mm / □96mm		□96mm / □144mm			
0 ... 120°											
Specify when ordering				00000.00 ... 99999.99				1A / 5A 1A...10000A / 1A 1A...10000A / 5A		35 ... 70 HZ	
57.7V ... 500V				100 ... 125 VAC 200 ... 250 VAC 380 ... 440 VAC				6V ... 600V ... / 100V (for Converter) ... / 110V (for Converter)		100 ... 500 VAC	
5A ... 200000A / 1A 5A ... 200000A / 5A				--				100mA ... 60A ... / 5A (for Converter) ... / 1A (for Converter)		--	
2kV				3kV				3kV		2kV	
1.5% (from the reference value)				±0.02s in 24 h				3% (from the reference value)		--	
Ploycarbonate											
UL94 V-0, self-extinguishing, non-dripping, halogen-free											
IP52 housing on the front IP00 connections without protection against accidental contact IP20 connections with protection against accidental contact											
Performance: IEC 60051 Safety: IEC 61010											

GMC INSTRUMENTS



Camille Bauer Metrawatt AG
Aargauerstrasse 7 • 5610 Wohlen • Schweiz
TEL +41 56 618 21 11 • FAX +41 56 618 21 21
www.camillebauer.com • info@cbmag.com